

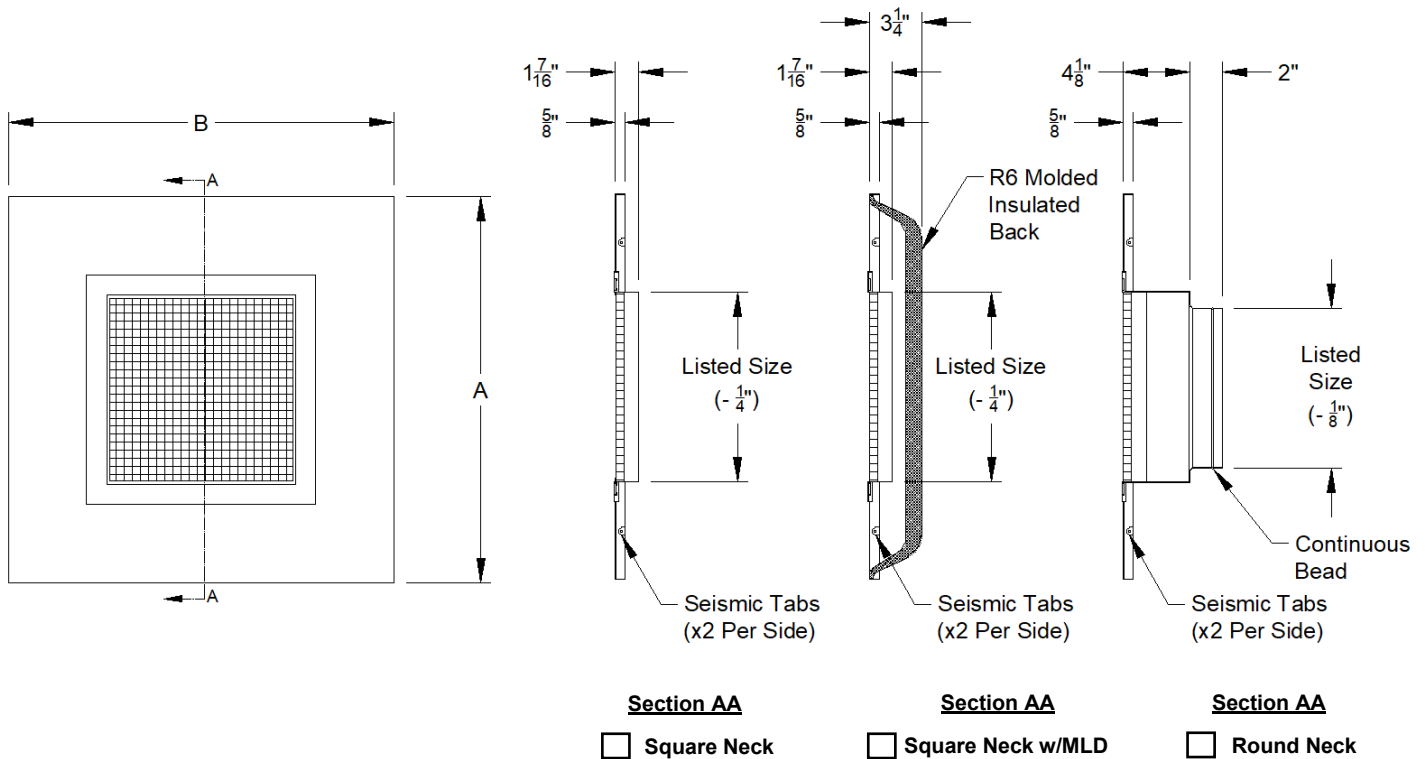
Model: _____ Size: _____ Tag: _____

Project Name: _____

Project Location: _____

Engineer: _____ Contractor: _____

Distributor: _____ Representative: _____



Features:

- Pristine White Powder Coat Finish

Construction Options:

- Acrylic Egg Crate
- Aluminum Egg Crate
- Steel Panel
- Aluminum Panel
- R6 Molded Universal Insulated Back

Nominal Module Size	Dimensions		Available Square Neck Sizes	Available Round Neck Sizes
	A	B		
12" x 12" ⁽¹⁾	11 3/4"	11 3/4"	10" x 10"	—
12" x 24" ⁽¹⁾	11 3/4"	23 3/4"	10" x 22"	—
24" x 24"	23 3/4"	23 3/4"	6" x 6", 8" x 8", 10" x 10", 12" x 12", 14" x 14", 16" x 16", 18" x 18", 20" x 20" and 22" x 22" ⁽¹⁾	6", 8", 10", 12", 14", 16", 18" and 20"
24" x 48" ⁽¹⁾	23 3/4"	47 3/4"	22" x 46"	—

(1) This size is only available in aluminum.

Note: This submittal is meant to demonstrate the general dimensions of this product. The illustrations are not meant to detail every aspect of the product. Drawings are not to scale. T.A. Industries, Inc. reserves the right to make changes without notice or obligations.